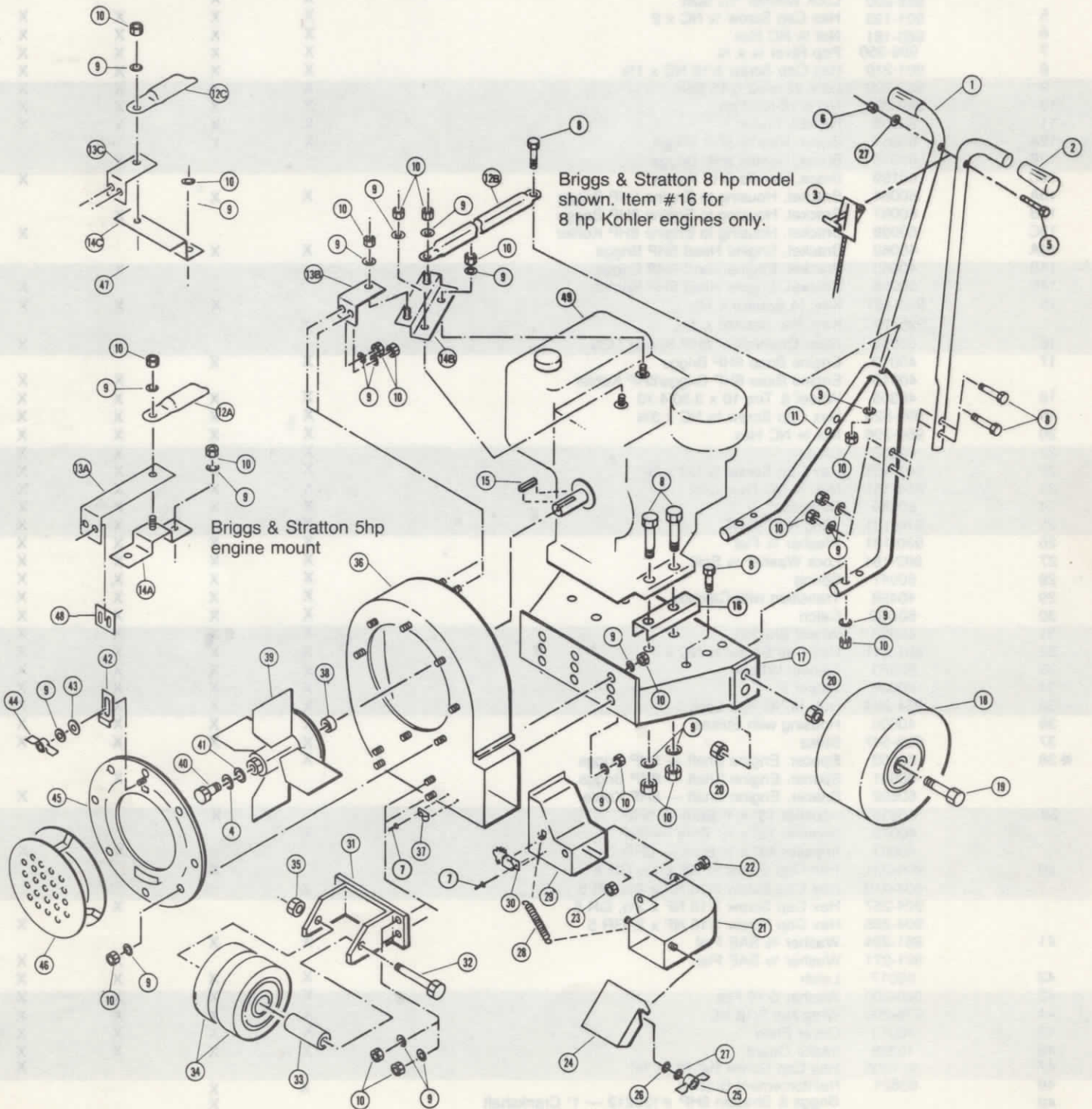


PARTS LIST

# SENSATION

MODELS: 62P5-0 (5B-A)  
63P5-0  
63P8-0 (8B-A)  
63P8-1 (8K-A)

## POWER BLOWER PARTS LIST



## PARTS LIST

ITEM NO.	PART NO.	DESCRIPTION	MODEL USED ON			
			62P5-0	63P5-0	63P8-0	63P8-1
1	60056	Handle Half, Upper w/Grips, 5HP & 8HP Briggs	X	X	X	X
2	323-313	Handle Grip "Sof-Touch" 7/8 Black	X	X	X	X
3	60186	Throttle Control With Knob 5HP, 8HP Briggs	X	X	X	
	60188	Throttle Control With Knob 8HP Kohler				X
4	982-246	Lock Washer 7/16 Split			X	X
	982-200	Lock Washer 5/16 Split	X	X		
5	901-193	Hex Cap Screw 1/4 NC x 2	X	X	X	X
6	960-181	Nut 1/4 NC Hex	X	X	X	X
7	999-350	Pop Rivet 1/8 x 1/4	X	X	X	X
8	901-210	Hex Cap Screw 5/16 NC x 1 1/2	X	X	X	X
9	982-200	Lock Washer 5/16 Split	X	X	X	X
10	960-200	Nut 5/16 NC Hex	X	X	X	X
11	60055	Handle, Lower	X	X	X	X
12A	60057	Brace, Handle 5HP Briggs	X	X		
12B	60058	Brace, Handle 8HP Briggs			X	
12C	60189	Brace, Handle 8HP Kohler				X
13A	60064	Bracket, Housing to Engine 5HP Briggs	X	X		
13B	60067	Bracket, Housing to Engine 8HP Briggs			X	
13C	60068	Bracket, Housing to Engine 8HP Kohler				X
14A	40062	Bracket, Engine Head 5HP Briggs	X	X		
14B	40065	Bracket, Engine Head 8HP Briggs			X	
14C	60066	Bracket, Engine Head 8HP Kohler				X
15	995-191	Key, 1/4 Square x 1 1/2		X	X	X
	995-160	Key 3/16 Square x 1 1/2	X			
16	60095	Riser Channel — 8HP Kohler Only				X
17	40012	Engine Base 5HP Briggs	X	X		
	40010	Engine Base 8HP Briggs/8HP Kohler			X	X
18	40359	Wheel & Tire 10 x 3.50/4.10	X	X	X	X
19	999-528	Hex Cap Screw 5/8 NC x 3 3/4	X	X	X	X
20	960-296	Nut 5/8 NC Hex	X	X	X	X
21	40042	Chute	X	X	X	X
22	901-185	Hex Cap Screw 1/4 NC x 5/8	X	X	X	X
23	964-181	Nut, 1/4 NC Hex Lock	X	X	X	X
24	60049	Deflector	X	X	X	X
25	976-181	Wing Nut, 1/4 NC	X	X	X	X
26	980-181	Washer 1/4 Flat	X	X	X	X
27	982-181	Lock Washer 1/4 Split	X	X	X	X
28	60047	Spring	X	X	X	X
29	40498	Transition with Catches	X	X	X	X
30	60632	Catch	X	X	X	X
31	40020	Wheel Bracket	X	X	X	X
32	901-241	Hex Cap Screw 3/8 NC x 4	X	X	X	X
33	60023	Sleeve, Wheel	X	X	X	X
34	60026	Wheel 5"	X	X	X	X
35	964-224	Nut, 3/8 NC Hex Lock	X	X	X	X
36	40000	Housing with Strikes	X	X	X	X
37	999-547	Strike	X	X	X	X
*38	60603	Spacer, Engine Shaft — 5HP Briggs	X			
	60601	Spacer, Engine Shaft — 8HP Briggs			X	
	60602	Spacer, Engine Shaft — 8HP Kohler				X
39	40835	Impeller 13" x 1" Bore — 5HP		X		
	40079	Impeller 12" x 3/4" Bore — 5HP	X			
	40081	Impeller 13" x 1" Bore — 8HP			X	X
40	904-231	Hex Cap Screw 3/8 NF x 1 1/2 GR 5		X		
	904-210	Hex Cap Screw 5/16 NF x 2 1/2 GR 5	X			
	904-257	Hex Cap Screw 7/16 NF x 2 1/2, GR 5			X	
	904-255	Hex Cap Screw 7/16 NF x 2, GR 5				X
41	981-224	Washer 3/8 SAE Flat	X	X		
	981-271	Washer 1/2 SAE Flat			X	X
42	60017	Latch	X	X	X	X
43	980-200	Washer 5/16 Flat	X	X	X	X
44	976-200	Wing Nut 5/16 NC	X	X	X	X
45	40013	Cover Plate	X	X	X	X
46	40355	Intake Guard	X	X	X	X
47	901205	Hex Cap Screw 5/16" NC x 3/4"				X
48	60624	Reinforcement Bracket	X	X		
49		Briggs & Stratton 5HP #130212 — 1" Crankshaft		X		
		Briggs & Stratton 5HP #130212 — 3/4" Crankshaft	X			
		Briggs & Stratton 8HP #190402 — 1" Crankshaft			X	
		Kohler 8HP #K181T — 1" Crankshaft				X

Part No. 113-709 11/12

\* Note: Models with serial no.'s 900000 and up do not use spacers (item #38). The impeller hubs on these units are marked with an external ring groove.



COMMERCIAL

# ***SENSATION***

## **POWER BLOWER OWNERS MANUAL**

**MODELS: 62P5-0 (5B-A)  
63P5-0  
63P8-0 (8B-A)  
63P8-1 (8K-A)**



THE SENSATION CORPORATION • OMAHA, NEBRASKA 68110 USA

## SAFETY



### Caution Symbol

THE TRIANGULAR SYMBOL SHOWN ABOVE IS USED THROUGHOUT THIS BOOKLET TO CALL SPECIAL ATTENTION TO ITEMS AFFECTING THE OPERATOR'S PERSONAL SAFETY. THESE ITEMS SHOULD BE GIVEN CLOSE ATTENTION.

1. CAUTION: Before leaving the operator's position, shut off engine.
2. Keep all shields in place.
3. Wait for all movement to stop before servicing machine.
4. Keep people and pets a safe distance away from machine.
5. Know the controls and how to stop quickly — READ THE OWNER'S MANUAL.
7. Stop engine before leaving operator position and before making any repairs or adjustments.
8. Stay alert for holes in terrain and other hidden hazards.
9. Handle gasoline with care — it is highly flammable.
  - A. Use approved gasoline container.
  - B. Never remove cap or add gasoline to a running or hot engine or fill fuel tank indoors.
  - C. Wipe up any spilled gasoline thoroughly before starting the engine.
  - D. Open doors if engine is run in garage — exhaust fumes are dangerous. Do not run engine indoors.
10. Keep machine and attachments in good operating condition and keep safety devices in place.
11. Keep all nuts, bolts, and screws tight to be sure equipment is in safe working condition.
12. Never store equipment with gasoline in the tank inside a building where fumes may reach an open flame or spark.
13. Allow engine to cool before storing in any enclosure.
14. To reduce fire hazard, keep engine free of grass, leaves, or excessive grease.
15. Blower and attachments should be stopped and inspected for damage after striking a foreign object, and the damage should be repaired before restarting and operating the equipment.
16. Do not change engine governor settings or overspeed engine.
17. Follow maintenance instructions as outlined in this manual.
18. DISCONNECT THE SPARK PLUG WIRE BEFORE MAKING ANY ADJUSTMENT OR REPAIR.



## SET-UP INSTRUCTIONS

1. Place Wheel Assembly on four Threaded Studs in Housing with the angled side of Bracket up (See item # 31 ). Secure using four 5/16 Nuts and Lockwashers provided.
2. Place lower Handle Loop Item # 11 into holes in rear of Engine base. Install two 5/16 NC x 1-1/2 Hex Cap Screws thru Handle and Engine base. Secure using 5/16 Nuts and Lockwashers provided.
3. Place Handle Brace item # 12 over Engine Bracket Stud item # 14 and over hole in center of lower Handle item # 11 . Install 5/16 NC x 1 1/2 Hex Cap Screw thru top of Handle Brace. Secure using 5/16 Nuts and Lockwashers provided.
4. Assemble the two upper handles (item #1) with throttle control (item #3) in between. Use the 1/4 NC x 2 hex cap screw, lock washer and nut provided.
5. Position Upper Handle Assembly on to lower Handle Loop. Secure using four 5/16 NC x 1-1/2 Hex Cap Screws, Lockwashers and Nuts provided. Install Cable Clips to keep cable next to Handle Tubing.
6. Install Chute and Transition Assembly onto the Housing by inserting the Transition tab under the Housing Strip. Open catches item # 30 and engage catch wire on housing strikes item # 37 .
7. Refer to engine manual provided for manufacturer's instructions.

## MAINTENANCE



**CAUTION: Disconnect Spark Plug Lead prior to performing any maintenance.**

### ENGINE

Follow Engine manufacturer's recommendations (Refer to Engine Manual provided).

### TIRES

Tire should be kept inflated to 16/20 Lbs.



**CAUTION: If abnormal vibration is noticed Stop Engine Immediately and inspect condition of Impeller Blades.**

- Note:
1. If Impeller Blades are bent or damaged, Impeller must be replaced.
  2. If no visual damage is noticeable, Impeller must be removed and checked for proper balance.
  3. If abnormal vibration persists, test run the Engine without Impeller installed.

### IMPELLER REMOVAL —

**Model 62P5 (5HP)**

Remove Intake Guard item # 46 and

Cover Plate item # 45 from front of Housing. Remove Bolt holding the Impeller onto the Shaft. Use 1/2 NF Hex Cap Screw and Thread it into the end of the Impeller Hub. Turn Bolt until Impeller is free of Engine Shaft.

### IMPELLER REMOVAL —

**Model 63P5, 63P8**

Same as for Model 62P5, except use a 5/8 NF Hex Cap Screw to pull Impeller off. Note; Impeller Blades must be in line with four Notches in Housing front.

### IMPELLER BALANCING

It is recommended that the Impeller be taken to your Sensation Dealer to insure proper Balancing.

### IMPELLER HOUSING

Area inside the Impeller Housing item # 36 should be clear of matted grass, leaves or other debris to prevent possible Blade interference and to insure best Air Pumping performance.

### PREVENTIVE MAINTENANCE

Check all Nuts and Bolts periodically to see that they are tightened securely.

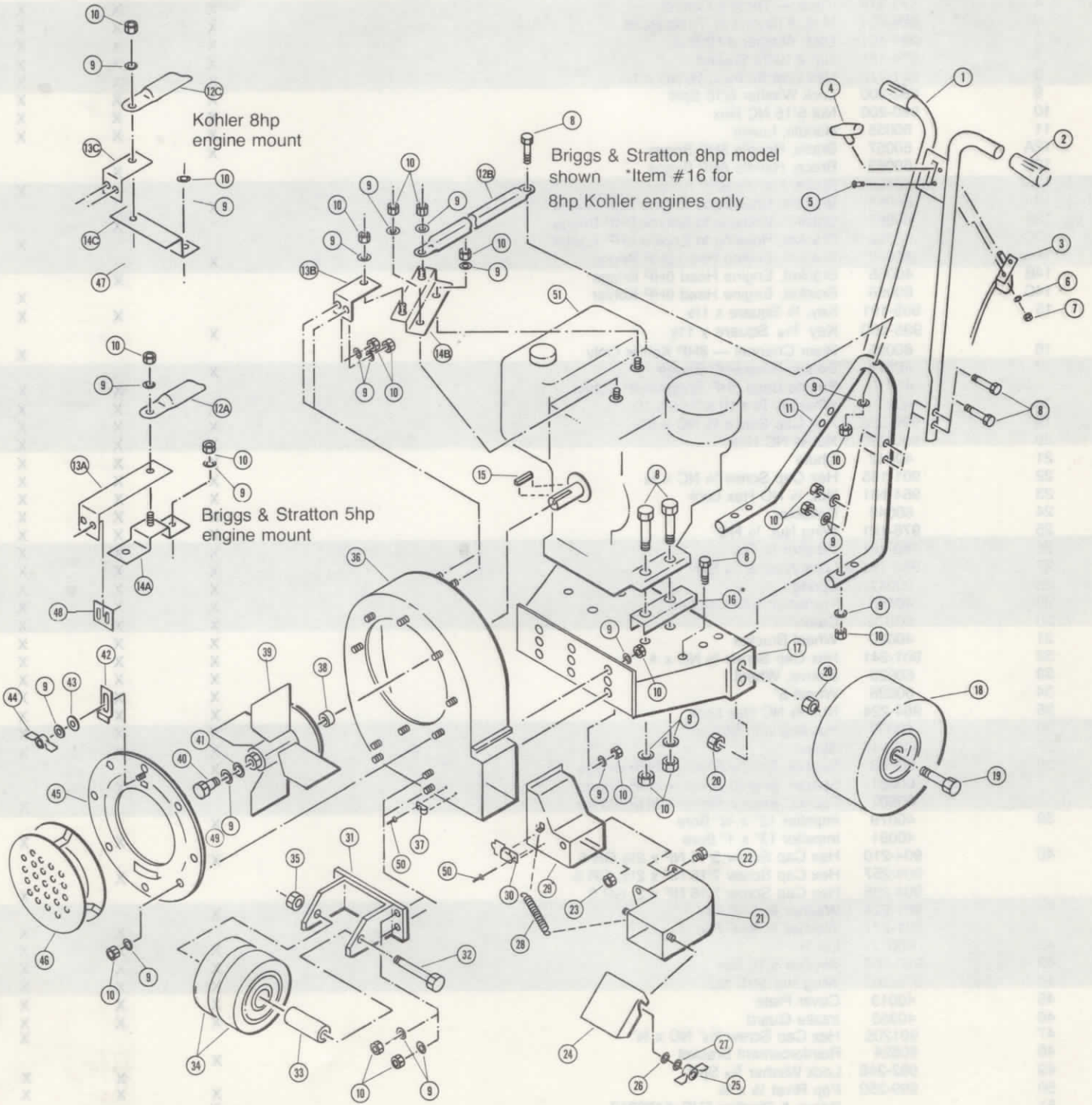




# SENSATION

## POWER BLOWER PARTS LIST

MODELS: 62P5-1  
63P8-2  
63P8-3





# PARTS LIST

ITEM NO.	PART NO.	DESCRIPTION	MODEL USED ON		
			62P5-1	63P8-2	63P8-3
1	40628	Handle, Upper w/Grips, 5HP & 8HP Briggs	X	X	
	40629	Handle, Upper w/Grips, 8HP Kohler			X
2	323-313	Handle Grip "Sof-Touch" 7/8 Black	X	X	X
3	60622	Throttle Control With Knob 5HP, 8HP Briggs	X	X	
	60623	Throttle Control With Knob 8HP Kohler			X
4	323-314	Knob — Throttle Control	X	X	X
5	924-154	M.S. #10/24 x 1/2 Truss Head	X	X	X
6	984-151	Lock Washer #10 Star	X	X	X
7	974-151	Nut #10/24 Square	X	X	X
8	901-210	Hex Cap Screw 5/16 NC x 1 1/2	X	X	X
9	982-200	Lock Washer 5/16 Split	X	X	X
10	960-200	Nut 5/16 NC Hex	X	X	X
11	60055	Handle, Lower	X	X	X
12A	60057	Brace, Handle 5HP Briggs	X		
12B	60058	Brace, Handle 8HP Briggs		X	
12C	60189	Brace, Handle 8HP Kohler			X
13A	60064	Bracket, Housing to Engine 5HP Briggs	X		
13B	60067	Bracket, Housing to Engine 8HP Briggs		X	
13C	60068	Bracket, Housing to Engine 8HP Kohler			X
14A	40062	Bracket, Engine Head 5HP Briggs	X		
14B	40065	Bracket, Engine Head 8HP Briggs		X	
14C	60066	Bracket, Engine Head 8HP Kohler			X
15	995-191	Key, 1/4 Square x 1 1/2		X	X
	995-160	Key 3/16 Square x 1 1/2	X		
16	60095	Riser Channel — 8HP Kohler Only			X
17	40012	Engine Base 5HP Briggs	X		
	40010	Engine Base 8HP Briggs/8HP Kohler		X	X
18	40359	Wheel & Tire 10 x 3.50/4.10	X	X	X
19	999-528	Hex Cap Screw 5/8 NC x 3/4	X	X	X
20	960-296	Nut 5/8 NC Hex	X	X	X
21	40042	Chute	X	X	X
22	901-185	Hex Cap Screw 1/4 NC x 5/8	X	X	X
23	964-181	Nut, 1/4 NC Hex Lock	X	X	X
24	60049	Deflector	X	X	X
25	976-181	Wing Nut, 1/4 NC	X	X	X
26	980-181	Washer 1/4 Flat	X	X	X
27	982-181	Lock Washer 1/4 Split	X	X	X
28	60047	Spring	X	X	X
29	40498	Transition with Catches	X	X	X
30	60632	Catch	X	X	X
31	40020	Wheel Bracket	X	X	X
32	901-241	Hex Cap Screw 3/8 NC x 4	X	X	X
33	60023	Sleeve, Wheel	X	X	X
34	60026	Wheel 5"	X	X	X
35	964-224	Nut, 3/8 NC Hex Lock	X	X	X
36	40000	Housing with Strikes	X	X	X
37	999-547	Strike	X	X	X
38	60603	Spacer, Engine Shaft — 5HP Briggs	X		
	60601	Spacer, Engine Shaft — 8HP Briggs		X	
	60602	Spacer, Engine Shaft — 8HP Kohler			X
39	40079	Impeller 12" x 3/4" Bore	X		
	40081	Impeller 13" x 1" Bore		X	X
40	904-210	Hex Cap Screw 5/16 NF x 2 1/2 GR 5	X		
	904-257	Hex Cap Screw 7/16 NF x 2 1/2, GR 5		X	
	904-255	Hex Cap Screw 7/16 NF x 2, GR 5			X
41	981-224	Washer 3/8 SAE Flat	X		
	981-271	Washer 1/2 SAE Flat		X	X
42	60017	Latch	X	X	X
43	980-200	Washer 5/16 Flat	X	X	X
44	976-200	Wing Nut 5/16 NC	X	X	X
45	40013	Cover Plate	X	X	X
46	40355	Intake Guard	X	X	X
47	901205	Hex Cap Screw 5/16" NC x 3/4"			X
48	60624	Reinforcement Bracket	X		
49	982-246	Lock Washer 7/16 Split		X	X
50	999-350	Pop Rivet 1/8 x 1/4	X	X	X
51		Briggs & Stratton 5HP #130212	X		
		Briggs & Stratton 8HP #190402		X	
		Kohler 8HP #K181T			X

Note: The Engine used on this unit is Warranted by the Engine Manufacturer and all parts and service must be obtained from the designated service center which may be found in the yellow pages under Engines.



COMMERCIAL

# ***SENSATION***

## **POWER BLOWER OWNERS MANUAL**

**MODELS: 62P5-1  
63P8-2  
63P8-3**



THE SENSATION CORPORATION • OMAHA, NEBRASKA 68110 USA

## SAFETY



### Caution Symbol

THE TRIANGULAR SYMBOL SHOWN ABOVE IS USED THROUGHOUT THIS BOOKLET TO CALL SPECIAL ATTENTION TO ITEMS AFFECTING THE OPERATOR'S PERSONAL SAFETY. THESE ITEMS SHOULD BE GIVEN CLOSE ATTENTION.

1. CAUTION: Before leaving the operator's position, shut off engine.
2. Keep all shields in place.
3. Wait for all movement to stop before servicing machine.
4. Keep people and pets a safe distance away from machine.
5. Know the controls and how to stop quickly — READ THE OWNER'S MANUAL.
7. Stop engine before leaving operator position and before making any repairs or adjustments.
8. Stay alert for holes in terrain and other hidden hazards.
9. Handle gasoline with care — it is highly flammable.
  - A. Use approved gasoline container.
  - B. Never remove cap or add gasoline to a running or hot engine or fill fuel tank indoors.
  - C. Wipe up any spilled gasoline thoroughly before starting the engine.
  - D. Open doors if engine is run in garage — exhaust fumes are dangerous. Do not run engine indoors.
10. Keep machine and attachments in good operating condition and keep safety devices in place.
11. Keep all nuts, bolts, and screws tight to be sure equipment is in safe working condition.
12. Never store equipment with gasoline in the tank inside a building where fumes may reach an open flame or spark.
13. Allow engine to cool before storing in any enclosure.
14. To reduce fire hazard, keep engine free of grass, leaves, or excessive grease.
15. Blower and attachments should be stopped and inspected for damage after striking a foreign object, and the damage should be repaired before restarting and operating the equipment.
16. Do not change engine governor settings or overspeed engine.
17. Follow maintenance instructions as outlined in this manual.
18. DISCONNECT THE SPARK PLUG WIRE BEFORE MAKING ANY ADJUSTMENT OR REPAIR.



## SET-UP INSTRUCTIONS

1. Place Wheel Assembly on four Threaded Studs in Housing with the angled side of Bracket up (See item # 31 ). Secure using four 5/16 Nuts and Lockwashers provided.
2. Place lower Handle Loop Item # 11 into holes in rear of Engine base. Install two 5/16 NC x 1-1/2 Hex Cap Screws thru Handle and Engine base. Secure using 5/16 Nuts and Lockwashers provided.
3. Place Handle Brace item # 12 over Engine Bracket Stud item # 14 and over hole in center of lower Handle item # 11 . Install 5/16 NC x 1-1/2 Hex Cap Screw thru top of Handle Brace. Secure using 5/16 Nuts and Lockwashers provided.
4. Position Upper Handle Assembly item # 1 on to lower Handle Loop item # 11 . Secure using four 5/16 NC x 1-1/2 Hex Cap Screws, Lockwashers and Nuts provided.
5. Place Throttle Control Cable and Control Head item # 3 under Handle and position control head in Mounting Bracket Plate. Secure using 10/24 x 1/2 Pan Head Machine Screws, Lockwashers and Nuts provided. Install Cable Clips to keep cable next to Handle Tubing.
6. Install Chute and Transition Assembly onto the Housing by inserting the Transition tab under the Housing Strip. Open catches item # 30 and engage catch wire on housing strikes item # 37 .
7. Refer to engine manual provided for manufacturer's instructions.

## MAINTENANCE



**CAUTION: Disconnect Spark Plug Lead prior to performing any maintenance.**

### ENGINE

Follow Engine manufacturer's recommendations (Refer to Engine Manual provided).

### TIRES

Tire should be kept inflated to 16/20 Lbs.



**CAUTION: If abnormal vibration is noticed Stop Engine Immediately and inspect condition of Impeller Blades.**

- Note: 1. If Impeller Blades are bent or damaged, Impeller must be replaced.
2. If no visual damage is noticeable, Impeller must be removed and checked for proper balance.
3. If abnormal vibration persists, test run the Engine without Impeller installed.

### IMPELLER REMOVAL —

#### Model 62P5 (5HP)

Remove Intake Guard item # 46 and

Cover Plate item # 45 from front of Housing. Remove Bolt holding the Impeller onto the Shaft. Use 1/2 NF Hex Cap Screw and Thread it into the end of the Impeller Hub. Turn Bolt until Impeller is free of Engine Shaft.

### IMPELLER REMOVAL —

#### Model 63P5, 63P8

Same as for Model 62P5, except use a 5/8 NF Hex Cap Screw to pull Impeller off. Note; Impeller Blades must be in line with four Notches in Housing front.

### IMPELLER BALANCING

It is recommended that the Impeller be taken to your Sensation Dealer to insure proper Balancing.

### IMPELLER HOUSING

Area inside the Impeller Housing item # 36 should be clear of matted grass, leaves or other debris to prevent possible Blade interference and to insure best Air Pumping performance.

### PREVENTIVE MAINTENANCE

Check all Nuts and Bolts periodically to see that they are tightened securely.



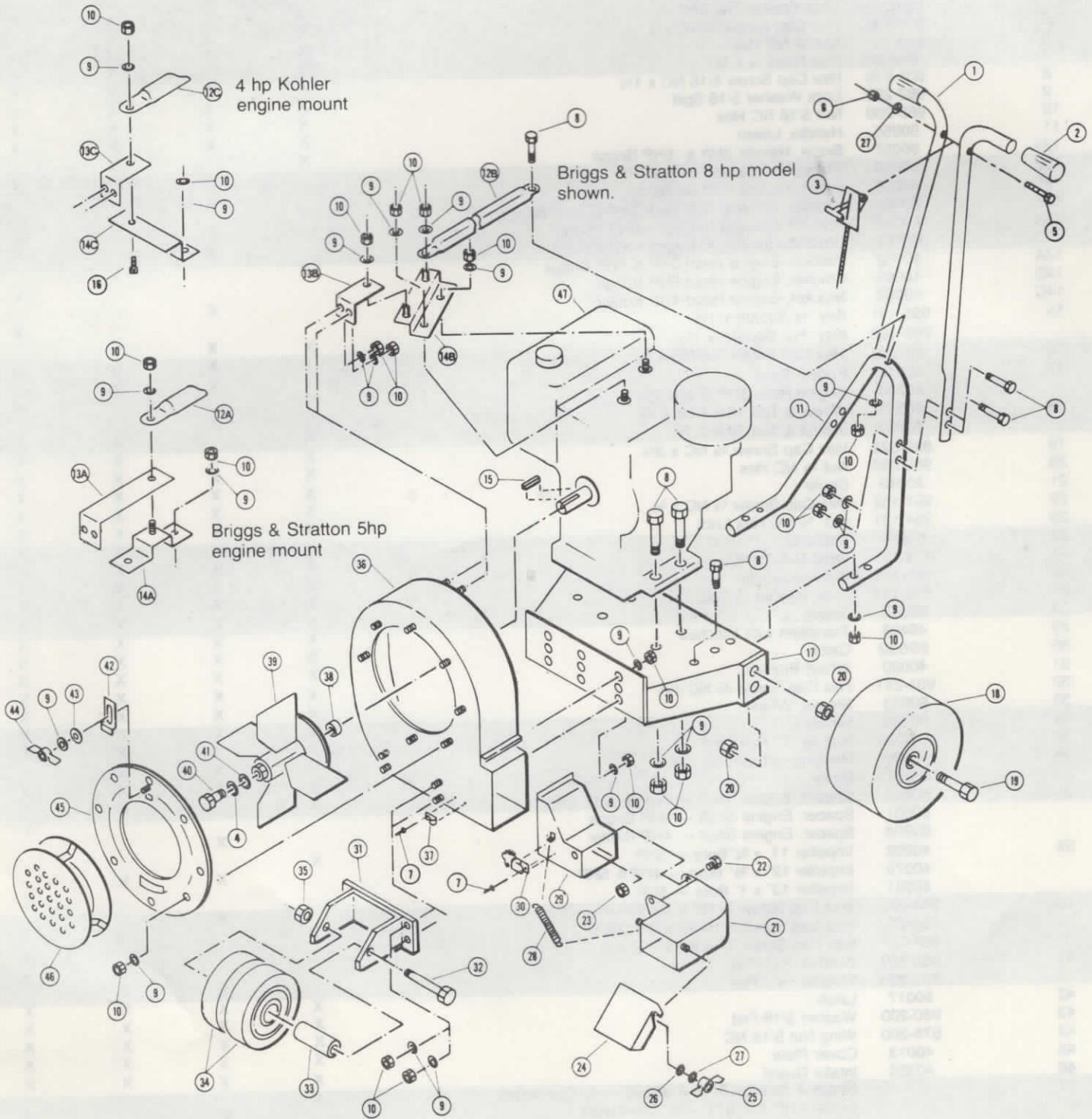




# SENSATION

## POWER BLOWER PARTS LIST

MODELS: 61S2-0 (3B)  
62P4-1 (4K-A)  
62S5-0 (5B)  
63S8-0 (8B)



## PARTS LIST

ITEM NO.	PART NO.	DESCRIPTION	MODEL USED ON			
			61S2-0	62P4-1	62S5-0	63S8-0
1	60056	Handle Half, Upper w/Grips.	X	X	X	X
2	323-313	Handle Grip "Sof-Touch" 7/8 Black	X	X	X	X
3	60186	Throttle Control With Knob	X		X	
	60185	Throttle Control With Knob		X		
	60187	Throttle Control With Knob				X
4	982-224	Lock Washer 3/8 Split		X		
	982-200	Lock Washer 5/16 Split	X		X	X
5	901-193	Hex Cap Screw 1/4 NC x 2	X	X	X	X
6	960-181	Nut 1/4 NC Hex	X	X	X	X
7	999-350	Pop Rivet 1/8 x 1/4	X	X	X	X
8	901-210	Hex Cap Screw 5/16 NC x 1 1/2	X	X	X	X
9	982-200	Lock Washer 5/16 Split	X	X	X	X
10	960-200	Nut 5/16 NC Hex	X	X	X	X
11	60055	Handle, Lower	X	X	X	X
12A	60057	Brace, Handle 3HP & 5HP Briggs	X		X	
12B	60058	Brace, Handle 8HP Briggs				X
12C	60059	Brace, Handle 4HP Kohler		X		
13A	60064	Bracket, Housing to Engine 3HP & 5HP Briggs	X		X	
13B	60067	Bracket, Housing to Engine 8HP Briggs				X
13C	60101	Bracket, Housing to Engine 4HP Kohler		X		
14A	40062	Bracket, Engine Head 3HP & 5HP Briggs	X		X	
14B	40065	Bracket, Engine Head 8HP Briggs				X
14C	40062	Bracket, Engine Head 4HP Kohler		X		
15	995-191	Key, 1/4 Square x 1 1/2				X
	995-160	Key 3/16 Square x 1 1/2	X	X	X	
16	901205	Hex Cap Screw 5/16 NC x 3/4"	X	X	X	X
17	40012	Engine Base	X	X	X	
	40010	Engine Base 8HP Briggs Only				X
18	40359	Wheel & Tire 10 x 3.50/4.10		X		
	60027	Wheel & Tire 10 x 2.75	X		X	X
19	999-528	Hex Cap Screw 5/8 NC x 3 3/4	X	X	X	X
20	960-296	Nut 5/8 NC Hex	X	X	X	X
21	40042	Chute	X	X	X	X
22	901-185	Hex Cap Screw 1/4 NC x 5/8	X	X	X	X
23	964-181	Nut, 1/4 NC Hex Lock	X	X	X	X
24	60049	Deflector	X	X	X	X
25	976-181	Wing Nut, 1/4 NC	X	X	X	X
26	980-181	Washer 1/4 Flat	X	X	X	X
27	982-181	Lock Washer 1/4 Split	X	X	X	X
28	60047	Spring	X	X	X	X
29	40498	Transition with Catches	X	X	X	X
30	60632	Catch	X	X	X	X
31	40020	Wheel Bracket	X	X	X	X
32	901-241	Hex Cap Screw 3/8 NC x 4	X	X	X	X
33	60023	Sleeve, Wheel	X	X	X	X
34	60026	Wheel 5"	X	X	X	X
35	964-224	Nut, 3/8 NC Hex Lock	X	X	X	X
36	40000	Housing with Strikes	X	X	X	X
37	999-547	Strike	X	X	X	X
38	60603	Spacer, Engine Shaft — 3HP & 5HP Briggs	X		X	
	60601	Spacer, Engine Shaft — 8HP Briggs				X
	60604	Spacer, Engine Shaft — 4HP Kohler		X		
39	40069	Impeller 11" x 3/4" Bore — 3HP	X			
	40079	Impeller 12" x 3/4" Bore — 4HP & 5HP		X	X	
	40081	Impeller 13" x 1" Bore — 8HP				X
40	904-232	Hex Cap Screw 3/8 NF x 1 1/4 GR 5		X		
	904-210	Hex Cap Screw 5/16 NF x 2 1/2 GR 5	X		X	
	904-257	Hex Cap Screw 7/16 NF x 2 1/2, GR 5				X
41	980-200	Washer 5/16" Flat				X
	980-224	Washer 3/8 Flat	X	X	X	
42	60017	Latch	X	X	X	X
43	980-200	Washer 5/16 Flat	X	X	X	X
44	976-200	Wing Nut 5/16 NC	X	X	X	X
45	40013	Cover Plate	X	X	X	X
46	40355	Intake Guard	X	X	X	X
47		Briggs & Stratton 3HP # 80202 — 3/4" Crankshaft	X			
		Kohler 4HP #K 91T — 3/4" Crankshaft		X		
		Briggs & Stratton 5HP # 130212 — 3/4" Crankshaft			X	
		Briggs & Stratton 8HP # 190402 — 1" Crankshaft				X



COMMERCIAL

# ***SENSATION***

POWER VACUUM PARTS LIST

## MODELS

72P4-0 (V4K-A)  
72P5-0 (V5B-A)  
72S5-0 (V5B)  
73P8-0 (V8B-A)  
73P8-1 (V8K-A)  
73S8-0 (V8B)  
73P5-0



THE SENSATION CORPORATION • OMAHA, NEBRASKA 68110 USA







# PARTS LIST

REF. NO.	PART NO.	DESCRIPTION	MODEL USED ON						
			72P4-0	72P5-0	72S5-0	73P8-0	73P8-1	73S8-0	73P5-0
1	60230	Handle, Upper	X	X	X	X	X	X	X
2	60238	Throttle Control	X						
	60237	Throttle Control		X	X				X
	60239	Throttle Control				X		X	
	60240	Throttle Control						X	
3	901-191	Hex Cap Screw 1/4 NC x 1 1/2	X	X	X	X	X	X	X
4	193-306	Cable Clip	X	X	X	X	X	X	X
5	901-186	Hex Cap Screw 1/4 NC x 3/4	X	X	X	X	X	X	X
6	60287	Hanger Bracket	X	X	X	X	X	X	X
7	982-181	Lock Washer 1/4 Split	X	X	X	X	X	X	X
8	960-181	Nut 1/4 NC	X	X	X	X	X	X	X
9	999-350	Pop Rivet 1/8	X	X	X	X	X	X	X
10	60290	Catch	X	X	X	X	X	X	X
11	901-210	Hex Cap Screw 5/16 NC x 1 1/2	X	X	X	X	X	X	X
12	60281	Angle Guide	X	X	X	X	X	X	X
13	60229	Handle, Lower	X	X	X	X	X	X	X
14	60292	Disposable Bag	X	X	X	X	X	X	X
15	40288	Container	X	X	X	X	X	X	X
16	60095	Riser Channel					X		
17	960-296	Nut 5/8 NC	X	X	X	X	X	X	X
18	40359	Wheel & Pneu. Tire 10"	X	X		X	X		X
	60027	Wheel & Semi Pneu. Tire 10"			X			X	
19	999-528	Hex Cap Screw 5/8 NC x 3 3/4	X	X	X	X	X	X	X
20	40360	Wheel & Axle Ass'y.	X	X		X		X	X
	40031	Wheel & Axle Ass'y.			X		X		
21	982-200	Lock Washer 5/16 Split	X	X	X	X	X	X	X
22	960-200	Nut 5/16 NC	X	X	X	X	X	X	X
23	982-224	Lock Washer 3/8 Split	X	X	X	X	X	X	X
24	976-224	Wing Nut 3/8 NC	X	X	X	X	X	X	X
25	60132	Thrust Bearing	X	X	X	X	X	X	X
26	964-224	Nut 3/8 NC 2 Way Lock	X	X	X	X	X	X	X
27	40125	Caster Fork	X	X	X	X	X	X	X
28	901-240	Hex Cap Screw 3/8 NC x 3 3/4	X	X	X	X	X	X	X
29	60026	Wheel 5" x 1 1/4" Wide	X	X	X	X	X	X	X
30	60023	Sleeve	X	X	X	X	X	X	X
31	40124	Caster Assembly	X	X	X	X	X	X	X
32	60131	Bushing Oilite	X	X	X	X	X	X	X
33	40127	Channel Extension	X	X	X	X	X	X	X
34	40126	Extension Assembly	X	X	X	X	X	X	X
35	40118	Carrier Bar	X	X	X	X	X	X	X
36	40122	Carrier Ass'y. w/Casters	X	X	X	X	X	X	X
37	60352	Clamping Strip	X	X	X	X	X	X	X
38	60350	Rubber Skirt	X	X	X	X	X	X	X
39	60353	Clamping Strip	X	X	X	X	X	X	X
40	40618	Door Assembly	X	X	X	X	X	X	X
41	60351	Rubber Skirt	X	X	X	X	X	X	X
42	923-183	Machine Screw 1/4 NC x 3/8	X	X	X	X	X	X	X
43	40111	Intake Door Ass'y.	X	X	X	X	X	X	X
44	964-200	Nut 5/16 NC 2 Way Lock	X	X	X	X	X	X	X
45	40222	Door Lever Bracket	X	X	X	X	X	X	X
46	60218	Door Lever, Lower	X	X	X	X	X	X	X
47	999-351	Pop Rivet 3/16	X	X	X	X	X	X	X
48	980-181	Washer 1/4 Flat	X	X	X	X	X	X	X
49	60219	Door Lever, Upper	X	X	X	X	X	X	X
50	40062	Bracket, Engine Head	X	X	X				X
	40065	Bracket, Engine Head				X	X	X	
51	40109	Intake Cover w/Gasket	X	X	X	X	X	X	X

REF. NO.	PART NO.	DESCRIPTION	MODEL USED ON						
			72P4-0	72P5-0	72S5-0	73P8-0	73P8-1	73S8-0	73P5-0
52	976-200	Wing Nut 5/16 NC	X	X	X	X	X	X	X
53	60018	Door Latch	X	X	X	X	X	X	X
54	60221	Lever Locking Bracket	X	X	X	X	X	X	X
55	323-805	Knob, Door Lever	X	X	X	X	X	X	X
56	60241	Gasket, Intake Cover	X	X	X	X	X	X	X
57	904-232	Hex Cap Screw 3/8 NF x 1 3/4 GR 5	X						
	904-210	Hex Cap Screw 5/16 NF x 1 1/2 GR 5		X	X				
	904-257	Hex Cap Screw 7/16 NF x 2 1/2 GR 5					X		X
	904-255	Hex Cap Screw 7/16 NF x 2 GR 5						X	
	904-231	Hex Cap Screw 3/8 NF x 1 1/2 GR 5						X	
58	982-224	Lock Washer 3/8 Split	X						X
	982-200	Lock Washer 5/16 Split		X	X				
	982-246	Lock Washer 7/16 Split					X	X	
59	980-224	Washer 3/8 Flat	X	X	X	X	X	X	X
60	40103	Intake Housing	X	X	X	X	X	X	X
61	40079	Impeller 12" x 3/4" Bore	X	X	X				
	40081	Impeller 13" x 1" Bore				X	X	X	
	40635	Impeller 13" x 1" Bore							X
*62	60604	Spacer	X						
	60603	Spacer		X	X				
	60601	Spacer				X		X	
	60602	Spacer					X		
63	911-229	Carriage Bolt 3/8 NC x 1							
64	964-271	Nut 1/2 NC 2 Way Lock							
65	40009	Engine Base 5 HP	X	X	X				X
	40011	Engine Base 8 HP				X	X	X	
66	995-160	Key 3/16 Sq x 1 1/2	X	X	X				
	995-191	Key 1/4 Sq x 1 1/2				X	X	X	X
67	40100	Impeller Housing	X	X	X	X	X	X	X
68	60241	Gasket, Chute	X	X	X	X	X	X	X
69	60137	Plate, Housing to Engine	X	X	X	X	X	X	X
70	60101	Bracket, Housing to Engine	X						
	40117	Bracket, Housing to Engine		X	X				X
	40341	Bracket, Housing to Engine				X	X	X	
71	60139	Brace, Handle	X						
	60232	Brace, Handle		X	X	X	X	X	X
72	40138	Chute	X	X	X	X	X	X	X
73	60144	Deflector	X	X	X	X	X	X	X
74	60149	Clamp	X	X	X	X	X	X	X
75	60285	Clamping Strip, Bag	X	X	X	X	X	X	X
76	60233	Venting Bag	X	X	X	X	X	X	X
77	901-188	Hex Cap Screw 1/4 NC x 1	X	X	X	X	X	X	X
78	901-207	Hex Cap Screw 5/16 NC x 1	X	X	X	X	X	X	X
79	40278	Container Frame	X	X	X	X	X	X	X
80	60289	Gasket — Container	X	X	X	X	X	X	X
81		Engine 4 HP Kohler #K-91T	X						
		Engine 5 HP B&S #130212-0532		X	X				
		Engine 8 HP B&S #190402-1706					X		
		Engine 8 HP Kohler #K-181T						X	
		Engine 8 HP B&S #190402-0637							X
		Engine 5 HP B&S #130212-0990							X

Note: \* 1. Models with serial no.'s 900000 and up do not use spacers (item #62). The impeller hubs on these units are marked with an external ring groove.  
 2. The Engine used on this unit is warranted by the engine manufacturer and all parts and service must be obtained from the designated service center which may be found in the Yellow Pages under "Engines".



COMMERCIAL

# ***SENSATION***

**POWER VACUUM OWNERS MANUAL**

<b>MODELS</b>	<b>72P4-0 (V4K-A)</b>
	<b>72P5-0 (V5B-A)</b>
	<b>72S5-0 (V5B)</b>
	<b>73P8-0 (V8B-A)</b>
	<b>73P8-1 (V8K-A)</b>
	<b>73S8-0 (V8B)</b>
	<b>73P5-0</b>



THE SENSATION CORPORATION • OMAHA, NEBRASKA 68110 USA

## SAFETY



### Caution Symbol

THE TRIANGULAR SYMBOL SHOWN ABOVE IS USED THROUGHOUT THIS BOOKLET TO CALL SPECIAL ATTENTION TO ITEMS AFFECTING THE OPERATOR'S PERSONAL SAFETY. THESE ITEMS SHOULD BE GIVEN CLOSE ATTENTION.

1. CAUTION: Before leaving the operator's position, shut off engine.
2. Keep all shields in place.
3. Wait for all movement to stop before servicing machine.
4. Keep people and pets a safe distance away from machine.
5. Know the controls and how to stop quickly — READ THE OWNER'S MANUAL.
7. Stop engine before leaving operator position and before making any repairs or adjustments.
8. Stay alert for holes in terrain and other hidden hazards.
9. Handle gasoline with care — it is highly flammable.
  - A. Use approved gasoline container.
  - B. Never remove cap or add gasoline to a running or hot engine or fill fuel tank indoors.
  - C. Wipe up any spilled gasoline thoroughly before starting the engine.
  - D. Open doors if engine is run in garage — exhaust fumes are dangerous. Do not run engine indoors.
10. Keep machine and attachments in good operating condition and keep safety devices in place.
11. Keep all nuts, bolts, and screws tight to be sure equipment is in safe working condition.
12. Never store equipment with gasoline in the tank inside a building where fumes may reach an open flame or spark.
13. Allow engine to cool before storing in any enclosure.
14. To reduce fire hazard, keep engine free of grass, leaves, or excessive grease.
15. Vac and attachments should be stopped and inspected for damage after striking a foreign object, and the damage should be repaired before restarting and operating the equipment.
16. Do not change engine governor settings or overspeed engine.
17. Follow maintenance instructions as outlined in this manual.
18. DISCONNECT THE SPARK PLUG WIRE BEFORE MAKING ANY ADJUSTMENT OR REPAIR.



## SET-UP INSTRUCTIONS

**NOTE: USE PARTS LIST IN CONJUNCTION WITH SET UP INSTRUCTIONS FOR PROPER ASSEMBLY OF PARTS.**

### HANDLE ASSEMBLY

Hand tighten nuts only before container is mounted.

1. Insert lower handle (item #13) into rear of engine base. Mount with  $\frac{5}{16}$ NC x  $1\frac{1}{2}$  bolts, lock washer, and nuts using center holes in base.
2. Position the upper handle (item #1) onto the lower handle. The lever locking bracket (item #54) must be mounted on the right side, slot towards front. Secure with  $\frac{5}{16}$ NC x  $1\frac{1}{2}$  bolts, lock washer, and nuts.

### CONTAINER MOUNTING

1. Insert a  $\frac{1}{4}$ NC x  $1\frac{3}{4}$  bolt through the throttle control and the left side of the upper handle. Hang the container frame (item #79) onto the bolt by means of the hanger bracket (item #6). Use a  $\frac{1}{4}$ NC x  $1\frac{1}{4}$  bolt for the right side.
2. Attach throttle cable to upper and lower handles with clips (item #4). Keep cable away from engine starter rope.
3. The angle guide (item #12) is held between the handle and the front of the container frame by means of the three  $\frac{5}{16}$ NC x  $1\frac{1}{2}$  bolts. The two outside bolts also secure two braces (items #71).
4. Join the braces at the engine head bracket with a  $\frac{5}{16}$ NC x 1 bolt, lock washer, and nut at the forward hole. Now tighten all handle bolts.
5. Hook the two straps on the venting bag onto the upper handle. Spread one of the disposable plastic bags into the container (shipped separately) and fold excess around the outside edges. The

edge of the container without catches fits into the angle guide (item #12) on the lower handle. Hook the six catches to the container to hold it in place.

### CHUTE MOUNTING

1. Mount the chute over the four housing studs being careful not to ruin the gasket. Two  $\frac{5}{16}$  flat washers fit over the slots on the back of the chute. Secure with lock washers and nuts.
2. Insert the deflector (item #73) into the chute. Secure four lock washers and nuts over the studs.
3. Pull the venting bag over the chute deflector and secure with the clamp (item #74).

### DOOR CONTROL ASSEMBLY

1. Position the door lever bracket (item #45) pointing up over the intake door studs. Secure with  $\frac{1}{4}$  lock washers and nuts.
2. Mount the lower door lever (item #46) to outside with a  $\frac{5}{16}$ NC x  $\frac{3}{4}$  bolt and lock nut, using the end with the single hole. (Lock nuts have a dimple on the side.) Make sure the lever works easily.
3. Insert the upper lever (item #49) through the locking bracket on the handle, lock with the bottom notch face down. Connect to the inside of the lower lever with  $\frac{1}{4}$ NC x  $\frac{3}{4}$  bolts, check the movement.
4. Screw the knob onto the upper lever.

### ENGINE

Follow engine manufacturer's instructions (refer to engine manual provided).



## OPERATION

### THROTTLE CONTROL

The control has been set to the proper CHOKE position; if the engine fails to start, (Briggs & Stratton) adjust as follows:

1. Loosen clamp screw holding cable to engine.
2. Place control lever at CHOKE position. Move the lower end of the cable to the rear as far as possible. Tighten clamp screw to hold it.

### DOOR CONTROL

The intake door is adjusted by locking the lever into one of four different positions. Closing the door increases suction, while opening it allows pick up of bottles, cans, etc.

### WHEEL ADJUSTMENT

1. The rear wheels may be changed by relocating them to the other hole.
2. Loosening the wing nuts on the front wheels allows them to slide up or down.

### BAG REMOVAL

1. Shut off engine.
2. Shake the venting bag to release the fine dust from the cloth pores.
3. Loosen the side catches first, then the rear ones. The container will fall of it's own weight.
4. Push the machine forward and remove the disposable bag.

## MAINTENANCE



**CAUTION: Disconnect Spark Plug Lead prior to performing any maintenance.**

### ENGINE

Follow Engine manufacturer's recommendations (Refer to Engine Manual provided).

### TIRES

Tire should be kept inflated to 16/20 Lbs.



**CAUTION: If abnormal vibration is noticed Stop Engine Immediately and inspect condition of Impeller Blades.**

- Note:
1. If Impeller Blades are bent or damaged, Impeller must be replaced.
  2. If no visual damage is noticeable, Impeller must be removed and checked for proper balance.
  3. If abnormal vibration persists, test run the Engine without Impeller installed.

### IMPELLER REMOVAL —

**Model 72P4, 72P5, 72S5,**

Remove Intake Guard item # 60 and

Cover Plate item # 45 from front of Housing. Remove Bolt holding the Impeller onto the Shaft. Use 1/2 NF Hex Cap Screw and Thread it into the end of the Impeller Hub. Turn Bolt until Impeller is free of Engine Shaft.

### IMPELLER REMOVAL —

**Model 73P8, 73S8, 73P5**

Same as for Model 62P5, except use a 5/8 NF Hex Cap Screw to pull Impeller off.

Note; Impeller Blades must be in line with four Notches in Housing front.

### IMPELLER BALANCING

It is recommended that the Impeller be taken to your Sensation Dealer to insure proper Balancing.

### IMPELLER HOUSING

Area inside the Impeller Housing item # 67 should be clear of matted grass, leaves or other debris to prevent possible Blade interference and to insure best Air Pumping performance.

### PREVENTIVE MAINTENANCE

Check all Nuts and Bolts periodically to see that they are tightened securely.



COMMERCIAL

# ***SENSATION***

## **POWER TILLER PARTS LIST**

### **MODELS**

**44S2-0 (4242-30)**  
**44S2-1**  
**44S2-2**  
**44S2-3**

**46D5-0 (4265-50)**  
**46D5-1**  
**46D5-2**  
**46D5-3**

**46T5-0**  
**46T5-1**  
**46T5-2**  
**46T5-3**



THE SENSATION CORPORATION • OMAHA, NEBRASKA 68110 USA

# SENSATION



The beveled edges of the tines must face forward when they're at the top position (see arrow, left). Since the tine assemblies are similar in appearance, it is possible to have the left-hand assembly in the right-hand position. This will make the blunt edge of the tine lead. To correct, interchange the assemblies.





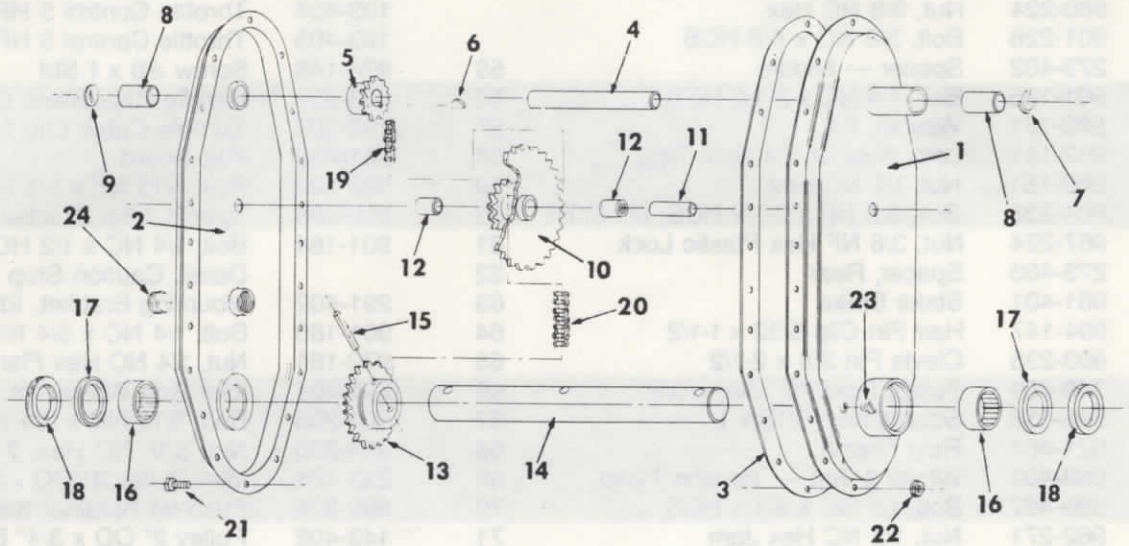
# PARTS LIST

REF NO.	PART NO.	DESCRIPTION	REF NO.	PART NO.	DESCRIPTION
1	042-401	Transmission Assembly	48	901-205	Handle Bolt, 5/16 NC x 3/4 HCS
2	021-401	Frame	49	966-200	Nut, 5/16 NC Hex Plastic Lock
3	023-402	Drive Support Gusset — R.H.	50	912-192	Eyebolt, 1/4 NC x 1-3/4
4	023-401	Drive Support Gusset — L.H.	51	964-181	Nut, 1/4 NC Hex 2 Way Lock
5	273-401	Spacer — Front	52	033-401	Match Plate
6	901-235	Bolt, 3/8 NC x 2-1/2 HCS	53	999-517	Machine Screw, 1/4 NC x 1-1/2
7	982-224	Lock Washer, 3/8 Split Type	54	193-403	Throttle Control 3 HP Briggs
8	960-224	Nut, 3/8 NC Hex		193-404	Throttle Control 5 HP Briggs
9	901-226	Bolt, 3/8 NC x 5/8 HCS		193-405	Throttle Control 5 HP Tecumseh
10	273-402	Spacer — Middle	55	934-145	Screw #8 x 1 SM
11	901-195	Bolt, 1/4 NC x 2-1/2 HCS	56	323-305	Handle Grip, Black Contour
12	980-181	Washer, 1/4	57	193-302	Throttle Cable Clip 1"
13	982-181	Lock Washer, 1/4 Split Type	58	281-402	Belt Guard
14	960-181	Nut, 1/4 NC Hex	59	999-524	Bolt, 5/16 NF x 5/8 HEX Whiz Lock
15	904-235	Bolt, 3/8 NF x 2-1/2 HCS, Gr. 5, HT	60	999-406	Spacer, Idler Bracket
16	967-224	Nut, 3/8 NF Hex Plastic Lock	61	901-184	Bolt, 1/4 NC x 1/2 HCS
17	273-403	Spacer, Rear	62		Decal, Caution Stop Engine!!
18	061-401	Stake Brake	63	291-402	Mounting Bracket, Idler
19	994-147	Hair Pin Clip 5/32 x 1-1/2	64	901-186	Bolt, 1/4 NC x 3/4 NCS
20	993-235	Clevis Pin 3/8 x 2-1/2	65	970-181	Nut, 1/4 NC Hex Flange Whiz-Lock
21	143-401	Pulley, Input 10" Dia. x 5/8"	66	291-401	Idler Arm Weldment
22	995-158	Square Key, 3/16 x 1	67	901-205	Bolt, 5/16 NC x 3/4 HCS
23	021-401	Rear Frame	68	964-200	Nut, 5/16 NC Hex, 2 Way Lock
24	083-401	Wheel & Tire — Traction Tread	69	293-401	Idler Pulley 3" OD x 3/8" Bore
25	999-487	Bolt, 1/2 NC x 3-1/4 HCS	70	989-224	Push-on Retainer 3/8"
26	962-271	Nut, 1/2 NC Hex Jam	71	143-402	Pulley 2" OD x 3/4" Bore
27	980-271	Washer, 1/2 Flat	72	153-401	Belt #4L480
28	960-271	Nut, 1/2 NC Hex	**73		Engine, 3 HP B&S #80212-0468-01
29	213-402	Pull Pin, Wheel Release			Engine, 5 HP B&S #130212-0532-01
30	203-404	Spring, Pull Pin			Engine, 5 HP Tex #HS50-670-63A
31	213-401	Foot Lever, Wheel Release	74	901-210	Bolt, 5/16 NC x 1-1/2 HCS
32	990-158	Roll Pin, 3/16 x 1	75	980-200	Washer, 5/16 Flat
33	999-516	Bolt, 3/8 NC x 1-1/4 HTS	*76	123-402	Tine L.H. — EMP
34	999-417	Threaded Spacer 3/8 NC		123-410	Tine L.H. — SEN
35	970-224	Nut, 3/8 Hex Flange Whiz-Lock		123-412	Tine L.H. — NIX
36	193-402	Cable, Idler Control		123-414	Tine L.H. — AJX
37	999-418	Lug — Cable Crimping	*77	123-401	Tine R.H. — EMP
38	063-404	Chain, Clutch Control		123-409	Tine R.H. — SEN
39	203-402	Spring, Clutch Control		123-411	Tine R.H. — NIX
40	992-130	Cotter Key, 1/8 x 3/4		123-413	Tine R.H. — AJX
41	063-403	Control Lever	78	121-401	Inner Tine Support
42	993-190	Clevis Pin, 1/4 x 1-1/4	79	121-402	Outer Tine Support 24", Model 44S2
43	989-181	Push-on Retainer 1/4"		121-403	Outer Tine Support 26" Models 46D5,
44	253-404	Handle Only — L.H.	80	960-246	Nut, 7/16 NC Hex 46T5
45	253-403	Handle Only — R.H.	81	982-246	Lock Washer, 7/16 Split Type
46	253-402	Handle Brace — R.H.	82	999-521	Bolt, 7/16 NC x 1-1/4 HTS
47	253-401	Handle Brace — L.H.	83	993-234	Clevis Pin 3/8 x 2-1/4

NOTE: \*1. "EMP" — Models 44S2-0, 46D5-0, 46T5-0  
 "SEN" — Models 44S2-1, 46D5-1, 46T5-1  
 "NIX" — Models 44S2-2, 46D5-2, 46T5-2  
 "AJX" — Models 44S2-3, 46D5-3, 46T5-3

\*\*2. The Engine used on this unit is warranted by the engine manufacturer and all parts and service must be obtained from the designated service center which may be found in the Yellow Pages under "Engines".

## TRANSMISSION ASSEMBLY



REF NO.	PART NO.	DESCRIPTION
---------	----------	-------------

1	041-401	Housing, L.H.
2	041-402	Housing, R.H.
3	233-407	Gasket
4	043-409	Shaft, Input
5	173-401	Sprocket, 12T
6	996-156	Woodruff Key
7	233-406	Seal, Oil
8	243-401	Bearing
9	233-405	Plug
10	173-405	Drive Reduction
11	243-405	Shaft, Tubular
12	243-406	Needle Bearing

REF NO.	PART NO.	DESCRIPTION
---------	----------	-------------

13	173-402	Sprocket, 17T
14	043-402	Shaft, Output
15	990-234	Roll Pin
16	243-403	Needle Bearing
17	233-401	Seal, Oil
18	233-402	Seal, Felt
19	163-401	Chain, #35
20	163-402	Chain, #50
21	901-184	Bolt, 1/4 NC x 1/2
22	970-181	Nut, 1/4 NC Whizlock
23	323-403	Oil Check Plug
24	323-401	Oil Fill Plug

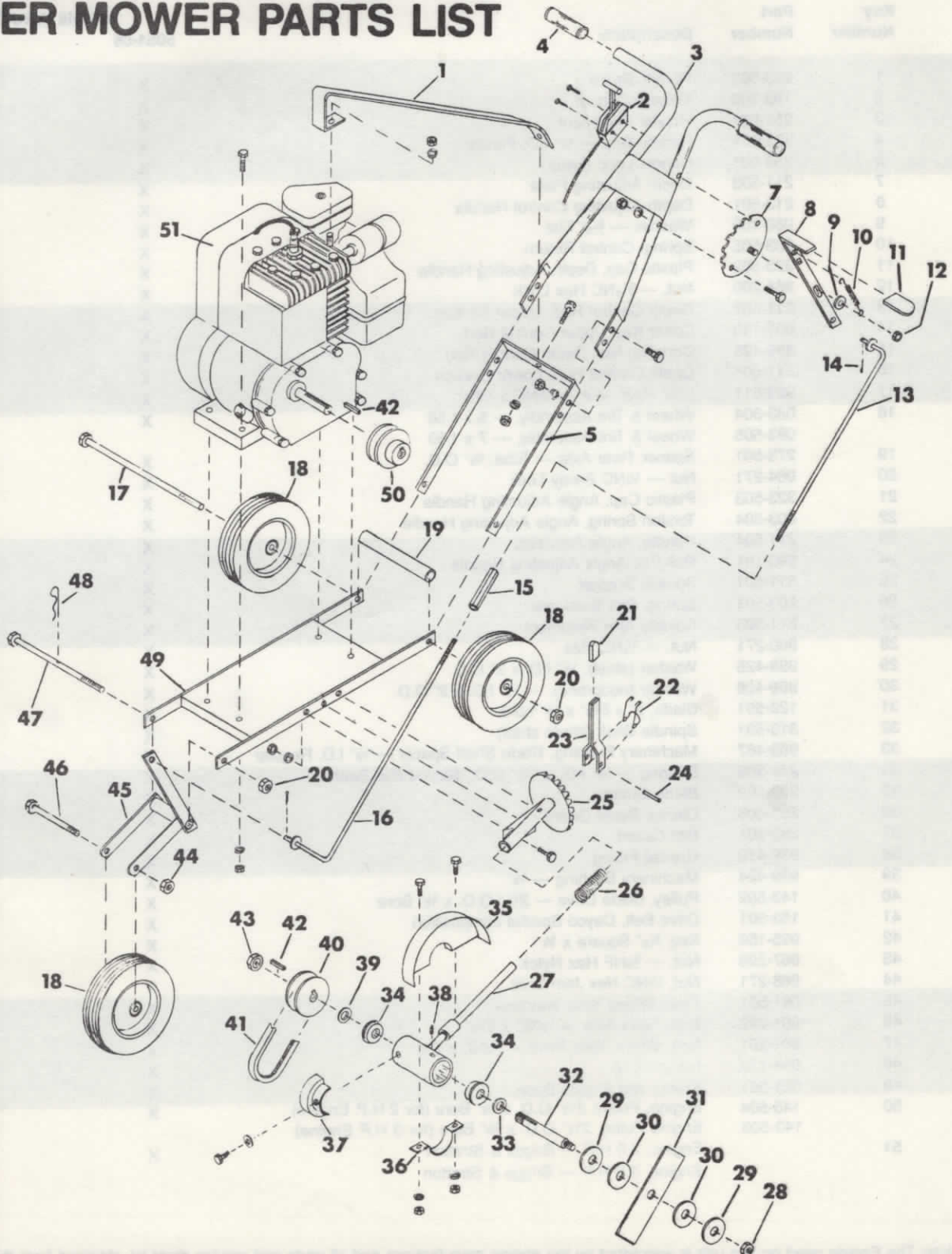


COMMERCIAL

# SENSATION

## POWER MOWER PARTS LIST

MODEL: 50S1-0 (TG-42)  
50D2-0 (TG-43)



THE SENSATION CORPORATION • OMAHA, NEBRASKA 68110 USA



# PARTS LIST

Key Number	Part Number	Description	Models Used On	
			50S1-05	50D2-05
1	253-502	Handle Brace	X	X
2	193-503	Throttle Control	X	X
3	251-501	Handle Weldment	X	X
4	323-501	Handle Grip — 3/4" I.D. Plastic	X	X
5	253-501	Handle Loop (lower)	X	X
7	211-503	Depth Adjusting Plate	X	X
8	213-501	Depth Adjusting Control Handle	X	X
9	980-200	Washer, — 5/16" Flat	X	X
10	203-505	Spring, Control Return	X	X
11	323-502	Plastic Cap, Depth Adjusting Handle	X	X
12	964-200	Nut, — 5/16NC Hex Lock	X	X
13	211-502	Depth Control Rod, Upper Section	X	X
14	992-130	Cotter Key, Upper Control Rod	X	X
15	999-428	Coupling Nut, Depth Control Rod	X	X
16	211-505*	Depth Control Rod, Lower Section	X	X
17	999-511	Bolt, Rear Axle — 1/2NC x 10 1/2"	X	X
18	083-504	Wheel & Tire Assembly, — 6 x 1.50	X	
	083-505	Wheel & Tire Assembly, — 7 x 1.50		X
19	273-501	Spacer, Rear Axle — Tube, 5/8" O.D.	X	X
20	964-271	Nut — 1/2NC 2-way Lock	X	X
21	323-503	Plastic Cap, Angle Adjusting Handle	X	X
22	203-504	Torsion Spring, Angle Adjusting Handle	X	X
23	211-504	Handle, Angle Adjusting	X	X
24	990-191	Roll Pin, Angle Adjusting Handle	X	X
25	311-501	Spindle Bracket	X	X
26	203-501	Spring, Belt Tensioner	X	X
27	311-503	Spindle Arm Weldment	X	X
28	960-271	Nut, — 1/2NC Hex	X	X
29	999-425	Washer (steel), 1/2" I.D. x 2" O.D.	X	X
30	999-426	Washer (neoprene), — 1/2" I.D. x 2" O.D.	X	X
31	123-501	Blade, 2" x 8 1/2" x 1/2" bore	X	X
32	313-501	Spindle Shaft (blade shaft)	X	X
33	999-467	Machinery Bushing, Blade Shaft Spacer — 1/2" I.D. Regular	X	X
34	243-502	Bearing — 5/8" I.D. x 1 3/8" O.D., Sealed Ball Bearing	X	X
35	283-502	Blade Guard	X	X
36	283-503	Clamp, Blade Guard	X	X
37	283-501	Belt Guard	X	X
38	999-412	Grease Fitting	X	X
39	999-424	Machinery Bushing — 5/8"	X	X
40	143-502	Pulley, Blade Drive — 2 1/2" O.D. x 5/8" Bore	X	X
41	153-501	Drive Belt, Dayco Special composition	X	X
42	995-156	Key, 3/16" Square x 3/4"	X	X
43	967-296	Nut, — 5/16NF Hex Nylok	X	X
44	968-271	Nut, 1/2NC Hex Jam Lock	X	X
45	081-501	Front Wheel Yoke Weldment	X	X
46	901-282	Bolt, Front Axle — 1/2NC x 2 1/2"	X	X
47	901-291	Bolt, Wheel Yoke Pivot — 1/2NC x 6 1/2"	X	X
48	994-123	Hairpin Clip	X	X
49	021-501	Frame and Engine Base	X	X
50	143-504	Engine Pulley, 2 1/2" O.D. x 5/8" Bore (for 2 H.P. Engine)	X	
	143-503	Engine Pulley, 2 1/2" O.D. x 3/4" Bore (for 3 H.P. Engine)		X
51		Engine, 2.0 H.P. — Briggs & Stratton	X	
		Engine, 3.0 H.P. — Briggs & Stratton		X

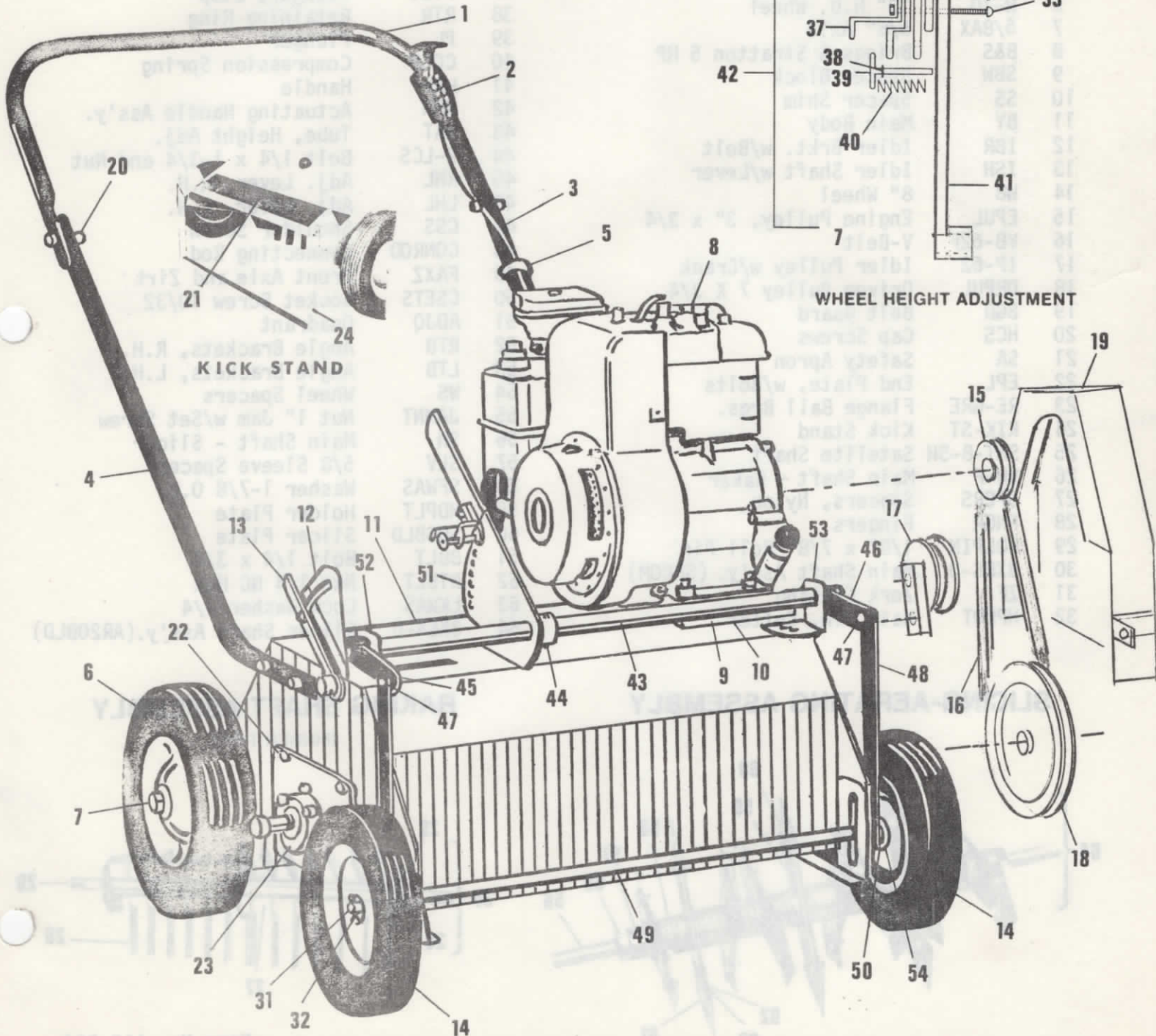
Note: The Engine used on this unit is warranted by the engine manufacturer and all parts and service must be obtained from the designated center which may be found in the Yellow Pages under "Engines".



10A5-0  
10R5-0

# SENSATION

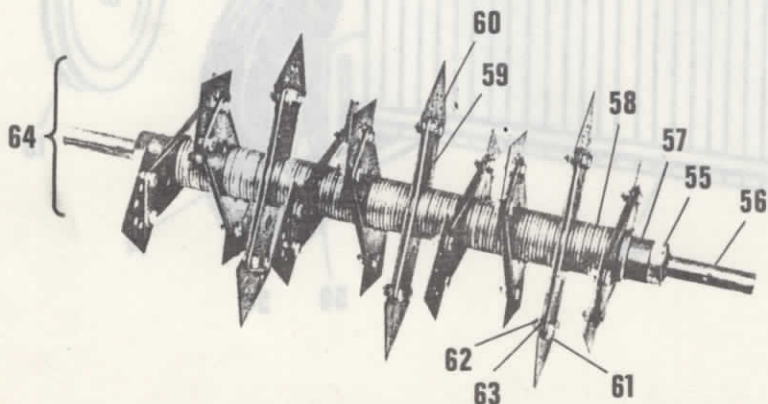
## POWER AERATOR-SLICER AND POWER RAKER PARTS LIST



## PARTS LIST

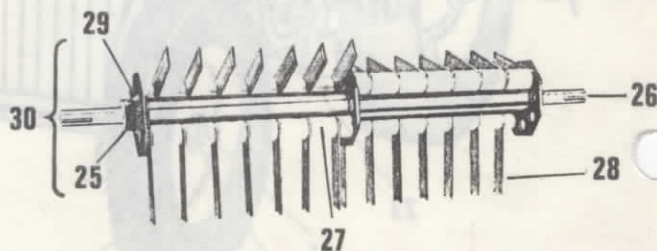
Item No.	Part No.	Description	Item No.	Part No.	Description
1	UH	Handle Top	33	2-10/32	Bolt 10-32 x 7/8
2	THR	Throttle Assembly	34	10GSP	Spacer
3	HLH	L.H. Handle	35	LOGD	Lower Guide
4	HRH	R.H. Handle	36	PTG	Plunger, Top Guide
5	THR-CL	Cable Clips	37	PTST	Plunger, Stop
6	W-10	10" H.D. Wheel	38	RTR	Retaining Ring
7	5/8AX	5/8" Axle	39	PL	Plunger
8	B&S	Briggs & Stratton 5 HP	40	COSP	Compression Spring
9	SBW	Spacer Block	41	HAH	Handle
10	SS	Spacer Shim	42	HAH	Actuating Handle Ass'y.
11	BY	Main Body	43	HAT	Tube, Height Adj.
12	IBR	Idler Brkt. w/Bolt	44	2-LCS	Bolt 1/4 x 1-3/4 and Nut
13	ISH	Idler Shaft w/Lever	45	RHL	Adj. Lever, R.H.
14	W8	8" Wheel	46	LHL	Adj. Lever, L.H.
15	EPUL	Engine Pulley, 3" x 3/4	47	CSS	Shoulder Screw
16	VB-62F	V-Belt	48	CONROD	Connecting Rod
17	IP-62	Idler Pulley w/Crank	49	FAXZ	Front Axle and Zirk
18	DRPUL	Driven Pulley 7 X 3/4	50	CSETS	Socket Screw 10/32
19	BGD	Belt Guard	51	ADJQ	Quadrant
20	HCS	Cap Screws	52	RTB	Angle Brackets, R.H.
21	SA	Safety Apron	53	LTB	Angle Brackets, L.H.
22	EPL	End Plate, w/Bolts	54	WS	Wheel Spacers
23	RE-GRE	Flange Ball Brgs.	55	JAMNT	Nut 1" Jam w/Set Screw
24	KIK-ST	Kick Stand	56	SH	Main Shaft - Slicer
25	SAT-8-SH	Satelite Shaft	57	SLV	5/8 Sleeve Spacer
26	SH-F	Main Shaft - Raker	58	SFWAS	Washer 1-7/8 O.D.
27	SPCRS	Spacers, Nylon	59	HDPLT	Holder Plate
28	FNGR	Fingers	60	SQSBLD	Slicer Plate
29	ROLPIN	1/8" x 7/8" Roll Pin	61	BBLT	Bolt 1/4 x 3/4
30	3XRS-0	Main Shaft Ass'y. (SHCOM)	62	NTBLT	Nut 1/4 NC Hex
31	ZF	Zerk Fitting	63	LKWAS	Lock Washer 1/4
32	HPCOT	Hair Pin, Cotter	64	3XSA-0	Slicer Shaft Ass'y.(AR20BLD)

### SLICING-AERATING ASSEMBLY



### RAKING SHAFT ASSEMBLY

(FINGER TYPE)





# SENSATION

MODELS IOA5-0  
IOR5-0

## POWER AERATOR-SLICER AND POWER RAKER INSTRUCTION SHEET

### ASSEMBLY INSTRUCTIONS

Very little assembly is needed in putting your Power Rake or Power Aerator/Slicer in operating condition. Assemble the upright portions of the handle to the Power Rake or Power Aerator/Slicer. Assemble the U portion of the handle, making sure that two small holes are on the left side of the U handle. These two small holes will accommodate the throttle control which is assembled after the U portion of the handle is attached to the upright handles.

NOTE: Because of the dust factor, the air breather should be cleaned as often as possible or use optional Air Cleaner Kit model 3XAC-0 to reduce maintenance down time.

### POWER RAKE HEIGHT ADJUSTMENT

Normal height adjustment on the Power Rake is obtained by placing the machine on a hard surface and adjusting the wheels so that the fingers are just touching the surface the machine is setting on. (By doing this, when the machine sets on the soft grass the fingers will be just touching the surface of the ground.) IMPORTANT. Do not set the fingers to the point that they penetrate the ground as this will counteract the centrifugal force of the fingers necessary to obtain a proper de-thatching job.

Through constant use the case hardened fingers will tend to wear themselves round on the raking edge of the finger. When this occurs, remove the end plates and turn the entire shaft assembly end for end and replace it in the machine. This will give you a new square raking edge in the fingers.

### POWER AERATOR/SLICER HEIGHT ADJUSTMENT

Normal height setting for proper blade penetration for slicing and aerating is approximately 1/2" to 3/4" into the

ground. To obtain this setting place the machine on a hard surface and adjust the blades to where they are just touching the surface. Then raise the wheel height adjustment four notches and this will give you the proper setting.

For the crawling type grasses such as Bermuda, Zoysia, Bahia, St. Augustine, etc. the normal setting is obtained in the same manner except you raise the wheels only one or two notches depending on the thickness and age of the mat build-up.

For single strand grasses such as Bluegrass, Rye grass, etc. it is best to slice in two separate directions perpendicular to each other. In other words when slicing the first time your direction of travel is north and south, then it is best to slice again in an east and westerly direction. IMPORTANT. It is necessary to water thoroughly after the aerating process is complete. Fertilizer, and seed if desired, can be effectively applied after the slicing operation is complete.

As blades wear, they may be rotated 4 times to give new cutting edges each time. As the blades wear down, raise the wheels which allows the blades to penetrate deeper into the ground. The rear wheels are adjustable to two different positions.

### MAINTENANCE

The maintenance of your Power Rake or Power Aerator/Slicer is relatively simple but most important. Two areas of consideration need attention for long-lasting machine life. First, are the main shaft bearings. These bearings are equipped with zirk fittings which will enable the owner to grease these bearings. Here again, the dust can work itself into the bearings. However, frequent greasings will flush out any dirt that may collect in the bearing casing. Secondly, and most important is thorough cleaning of the sponge air breather on the engine.